



Copper Connectivity Solutions – Specialty Products



Ethernet Test Access Panel.....	190
T1 Demarcation Modular Patch Panels.....	191
RJ45 Coupler Panel.....	192
Fast Ethernet Patch Panels.....	193
25-Pair Cable Assemblies.....	194
Highband® 10 Collocation Block Systems.....	195
Feed-Thru (FT) Termination Block Systems.....	197
Feed-Thru (FT) Field Assembly Kits.....	199
Patch Cords for Feed-Thru (FT) Blocks.....	201
Feed-Thru (FT) Block Test Shoe Harness.....	203
Feed-Thru (FT) Block Test Cord.....	203



Copper Connectivity Solutions – Specialty Products

Ethernet Test Access Panel

The Ethernet test access panel allows non-invasive testing and monitoring of Ethernet signals up to and including Gigabit Ethernet. As carrier and enterprise networks deploy critical data services, the need to provide noninvasive points for testing and monitoring becomes a critical element of network design. ADC's solution features standard RJ45 interfaces in a 24-port two rack space high panel with a make-before-break (MBB) connector in-line with the Ethernet circuit. A number of value-added modules can be inserted into the MBB connector, including a "look-both-ways" test access cord with a standard RJ45 output that can be plugged into any standard Ethernet test set or intrusion detection system (IDS).



Features

- High-density: 24 ports in two rack spaces
- Standard RJ45 patch panel interface
- Standard RJ45 test access cord attaches to any Ethernet test system
- Make-before-break connector allows Ethernet circuit to be accessed, re-routed, protected, or monitored without disrupting existing cabling
- Mounts in 19- and 23-inch WECO or EIA racks; can also be wall mounted
- Category 5e performance

Applications

- Test and turn-up of new Ethernet services
- Performance monitoring of existing Ethernet lines
- Intrusion detection systems (IDS)
- 10/100Base-T Ethernet
- Gigabit Ethernet (1000Base-T)
- T1/E1

Ordering Information

Description	Dimensions (HxWxD)	Catalog Number
24-port RJ45 to RJ45 test access panel, 2RU	3.5" x 17.2" x 3" (88.9mm x 436.88mm x 76.2mm)	ADCPP24-DRJ
24-port RJ45 to RJ45 test access panel, 2RU: All front access (inputs and outputs on front of panel only)	3.5" x 17.2" x 3" (88.9mm x 436.88mm x 76.2mm)	ADCPP24-DFRJ
Ethernet test access cord		ADCDM-TEST



Copper Connectivity Solutions – Specialty Products

T1 Demarcation Modular Patch Panels

ADC modular T1 demarcation patch panels feature RJ48X or RJ48C wiring with a variety of rear termination options. The T1 demarcation patch panels offer end users a familiar RJ interface by which the T1 signal can be accessed via industry standard RJ45 patch cables.

Features

- Bantam nonintrusive T1 signal monitoring (MPP-N28BA1 only)
- RJ48X (T1 loopback) or RJ45C (no loopback) wiring
- Variety of rear termination options (wire-wrap, 64-pin, 50-pin)
- Category 3 performance
- Variety of mounting options (19- or 23-inch rack mounting, wall mounting)
- Compatible with industry standard RJ45 patch cords



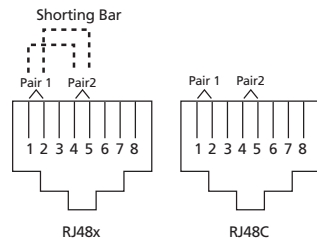
MPP-N28BA1 (front)



MPP-N28BA1 (rear)



MPP-CXFBA1 (front)



RJ48X has a shorting bar between transmit and receive pins 1, 2 and 4, 5 to allow for T1 signal loopback when no patch cord is present. The RJ48C has no shorting bar.

Ordering Information

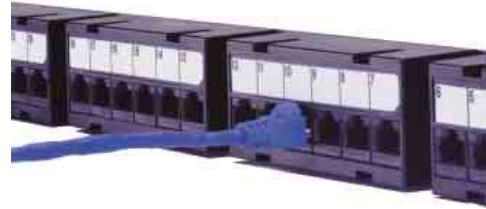
Port Count	Wiring	Rear Termination	EIA Mounting	Catalog Number
28 (with bantam monitoring ports)	RJ48X	64-pin or wire-wrap	2RU x 19" or 23"	MPP-N28BA1
28	RJ48X	Wire-wrap	1RU x 19" or 23"	MPP-GDXBA1
28	RJ48X	64-pin	1RU x 19"	MPP-DXZBA0
14	RJ48X	Wire-wrap, front access	Wall mount, 3.5" x 19"	MPP-CXZXF4
8	RJ48X	Wire-wrap, front access	Wall mount, 3.5" x 14"	MPP-CXZXF3
5	RJ48X	Wire-wrap, front access	Wall mount, 3.5" x 9.9"	MPP-CXZXF2
28	RJ48C	Wire-wrap	1RU x 19" or 23"	MPP-GDXBA2
24	RJ48C shielded	50-pin shielded	1RU x 19"	MPP-CXFBA1-S
24	RJ48C	50-pin	1RU x 19"	MPP-CXFBA1
32	RJ48C	50-pin	1RU x 19"	MPP-CXZXB2A



Copper Connectivity Solutions – Specialty Products

RJ45 Coupler Panel

ADC's RJ45 coupler panel provides feed-through data and voice connectivity on the front and rear for Category 5e and 6 applications. Connectivity on the front of the panel accommodates standard RJ45 patch cords. Connectivity for hubs, routers and other active equipment on the back of the panel is also designed for RJ45 patch cords—creating a convenient connection field for data applications. Includes port labeling for front and rear. Width is 48.26cm (19-inch).



RJ45 coupler panel (rear view)



RJ45 coupler panel (front view)

Ordering Information

Description	Port Count	Category	Rack Units	Catalog Number
RJ45 coupler panel	24	6	1	ADCPP24606
	48	6	2	ADCPP48606
	24	Shielded 6	1	ADCPP24RJ6-S
	24	Shielded 5e	1	ADCPP24RJ5E-S
	24	5e	1	ADCPP24505
	48	5e	2	ADCPP48505
	16	5e	1	ADCPP16KSRJRJ
	32	5e	1	ADCPP32KSRJRJ



Copper Connectivity Solutions – Specialty Products

Fast Ethernet Patch Panels

Features

- Durable, quality construction for maximum performance
- Saves time in moves, adds, and changes
- Features secure and convenient 25-pair connections on the rear
- Modular 8-pin, 4-pair jacks on the front
- 5100 pin-out is 1, 2–3, 6
- 5800 has all pairs wired
- Includes write-on labels on front
- 5100 supports 10Base-T and 100Base-T Ethernet
- 5800 supports 10/100 and 1000Base-T Ethernet
- Optional icons speed circuit identification



5100 patch panel, 48-port

The first step to integrate Fast Ethernet traffic into a twisted pair network is to terminate both station side and equipment side connections on high performance ADC patch panels.

For the Ethernet switching system, 5100 and 5800 patch panels provide convenient 25-pair (50-pin) female RJ21x connections on the rear, with rugged 8-pin modular jacks on the front. Port identification is accomplished with write-on port labels and optional icons.

Ordering Information

Description	Pin-Out	Port Count	Rear Connector	Rack Units	Catalog Number
5100 patch panel	1, 2–3, 6	24	RJ21x	2	ADCPP245100TEL
5100 patch panel	1, 2–3, 6	48	RJ21x	2	ADCPP485100TEL
5800 patch panel, T568B	1–8	24	RJ21x	1	ADCPP245800BTEL
5800 patch panel, T568B	1–8	48	RJ21x	2	ADCPP485800BTEL

DIMENSIONS (W X H)

- 1RU** 19.0" x 1.75" (48.26 x 4.45cm)
- 2RU** 19.0" x 3.50" (48.26 x 8.89cm)



Copper Connectivity Solutions – Specialty Products

25-Pair Cable Assemblies

Features

- Convenient 25-pair/50-pin RJ21x connections
- Connectors available in:
 - 180° exit angle
 - Hydra terminated with twelve numbered RJ45 plugs
- Exceeds Category 5 PowerSum requirements
- Supports 10Base-T and 100Base-T Ethernet



The 25-pair cable assemblies are Category 5 PowerSum telco cables that provide precise connectivity between Fast Ethernet switches and 5100 or 5800 Patch Panels.

With the convenience and precision of RJ21x connectors, 25-pair cable assemblies easily handle even high density Fast Ethernet switch configurations. In addition, the durable connectors feature a lock-down system that eliminates intermittency often associated with other telco cables.

RJ21x/RJ21x

Ordering Information

Description	Connector 1	Connector 2	Catalog Number
25-pair cable assemblies	Straight Exit 180°	Straight Exit 180°	ADCPC-T3T3-5100-XX*

*Replace the XX in the ordering number with desired length in feet: 05, 10, 15, 20, 25, 30, 35, 40, 45, or 50 feet.

RJ21x/Hydra

Ordering Information

Description	Connector 1	Connector 2	Catalog Number
25-pair cable assemblies	Straight Exit 180°	Hydra, longest to shortest plug: 1–12	ADCPC-T3H1-5100-XX*
	Straight Exit 180°	Hydra, longest to shortest plug: 12–1	ADCPC-T3H2-5100-XX*
	Straight Exit 180°	Hydra, plugs same length	ADCPC-T3H3-5100-XX*

Note: Hydra connectors consist of 12 RJ45 plugs pinned 1,2–3,6.

*Replace the XX in the catalog number with desired length in feet: 06, 10, or 15 feet.



Copper Connectivity Solutions – Specialty Products

HighBand® 10 Collocation Block Systems

HighBand 10 collocation blocks are preterminated to industry standard 25-pair (RJ-21X) connectors mounted on the rear of the back mount frame for fast broadband/DSL service deployment. The 25-pair connectors are oriented for top feed cable assemblies. Available in either 100-, 200- or 300-pair, these blocks are ideal for use with ADC cable for a complete broadband/DSL transmission solution.

Features

- Superior network performance and throughput
- High-density IDC termination system
- Provides “look-both-ways” fault isolation, testing and qualification without removing wires
- Patching provides the versatility required for easy changes and testing
- Preterminated versions reduce installation time
- Numerous labeling options allow for comprehensive marking



100-pair HighBand® 10 collocation block



200-pair HighBand® 10 collocation block



300-pair HighBand® 10 collocation block

Ordering information follows on the next page

6/10 • 102094AE TrueNet® Structured Cabling

Copper Connectivity Solutions – Specialty Products



Copper Connectivity Solutions – Specialty Products

HighBand® 10 Collocation Block Systems

Ordering Information

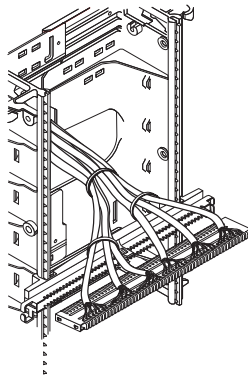
Description	Dimensions (HxWxD)	Catalog Number
HighBand® 10 collocation block systems <i>Quantity: 1</i>		
100-pair preterminated to (4) 25-pair female telco (RJ-21X) connectors	9.63" x 4.88" x 3.69" (244.5mm x 123.8mm x 93.7mm)	6637 1 150-60
200-pair preterminated to (8) 25-pair female telco (RJ-21X) connectors	18.44" x 4.88" x 3.69" (468.0mm x 123.8mm x 93.7mm)	6637 1 180-60
300-pair preterminated to (12) 25-pair female telco (RJ-21X) connectors	27.13" x 4.88" x 3.69" (689.0mm x 123.8mm x 93.7mm)	6637 1 210-60



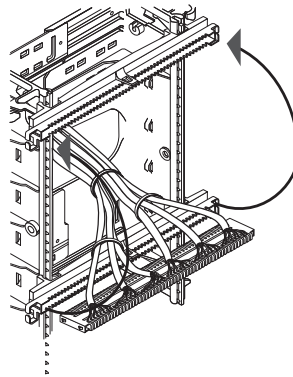
Copper Connectivity Solutions – Specialty Products

Feed-Thru (FT) Termination Block Systems

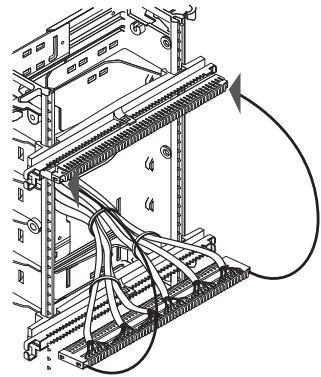
6/10 • 102094AE TrueNet® Structured Cabling



1. Terminate cables



2. Move base unit from bottom to top



3. Flip and snap into place

Features

- Appropriate for both data and voice application
- High-density and quick installation are the hallmarks of the 25-pair Feed-Thru (FT) block system
- Convenient preterminated assemblies with 50-pin telco connectors provide for fast, reliable termination
- The 25-pair FT block is the perfect replacement for 110 installations
- Complete patching and cross-connect options provide the versatility required for any configuration
- Color-coded blocks are offered, with each pair color marked according to industry standards
- Handy label holders provide clear identification of groups or individual pairs



25-pair FT block, 5-pair color-coded



25-pair FT block, 4-pair color-coded



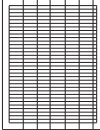
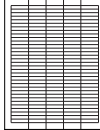
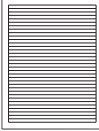
Type 160 hinged label holder

Ordering information follows on the next page



Copper Connectivity Solutions – Specialty Products

Feed-Thru (FT) Termination Block Systems

Ordering Information		
Description	Dimensions (HxWxD)	Catalog Number
25-pair FT block <i>Quantity: 1</i>		
4-pair color-coded Allows high-density termination in small area; two-piece assembly, consisting of base and connector. 4-pair color-code marked on face of block. Used for terminating 4-pair station cables; each block terminates (6) 4-pair cables	1" x 8.75" x 1.88" (25.4mm x 225.3mm x 47.6mm)	6631 2 135-05
5-pair color-coded Allows high-density termination in small area; two-piece assembly, consisting of base and connector. 5-pair color-code (blue, orange, green, brown, slate) marked on face of block. Used for terminating 25-pair cable	1" x 8.75" x 1.88" (25.4mm x 225.3mm x 47.6mm)	6631 2 135-06
5-pair coded Allows high-density termination in small area; two-piece assembly, consisting of base and connector. <i>Marked in white every fifth pair.</i> Used for terminating riser cables or with PBX systems. Each block terminates 25-pair	1" x 8.75" x 1.88" (25.4mm x 225.3mm x 47.6mm)	6631 2 135-00
Type 160 hinged label holder Used on 25-pair FT block to identify cable groups or individual pairs; folds out of the way when punching down wires; can be used for 1- to 25-pair configurations <i>Quantity: 1</i>		6631 2 003-00
Label sheets for Type 160 hinged label holder Each 8.5" x 11" sheet contains 34 perforated labels <i>Quantity: 1 sheet per package</i>		
Blue and white One side is blue and marked in 4-pair increments; other side is white and marked in 5-pair increments	 	6631 3 100-26
Gray/brown		6631 3 100-22
Yellow/red		6631 3 100-23
Orange		6631 3 100-27
Purple		6631 3 100-28
Blue		6631 3 100-29
Green		6631 3 100-30

For examples of TIA/EIA color-coding, refer to the chart on page 234.

Tech Tip

Labeling templates are available in Microsoft, Word and Excel formats.
Please contact ADC Technical Assistance Center



Copper Connectivity Solutions – Specialty Products

Feed-Thru (FT) Field Assembly Kits

The FT field assembly kits feature the universal mounting system, which provides modularity and three mounting options

- Wall mount
- Wall mount with optional UMS backboard for greater cabling depth
- Rack mount with UMS backboard

FT field assembly kits include a universal mounting bracket, two horizontal wire managers and a choice of 4-pair or 5-pair color-coded FT blocks. Route cable from the top, bottom or rear. Four-pair color-coded blocks are marked with TIA color codes in 4-pair groups. Five-pair color-coded blocks are marked with a white stripe on every fifth pair. Labeling accessories, such as label holders and paper labels, are sold separately (see pages 231–235)



300-pair FT field assembly kit

Ordering information follows on the next page



Copper Connectivity Solutions – Specialty Products

Feed-Thru (FT) Field Assembly Kits

Ordering Information

Description	Dimensions (HxWxD)	Catalog Number
FT field assembly kits		
100-pair, 4-pair color-coded kit Includes (4) 25-pair FT blocks with 4-pair color-coding, 2 horizontal wire managers, 1 universal mounting bracket. Terminates (24) 4-pair station cables. Hinged label holders for identification of stations or pairs ordered separately	14.75" x 10.75" x 5.25" (374.7mm x 273.1mm x 133.4mm)	6642 1 115-04
100-pair, 5-pair color-coded kit Includes (4) 25-pair FT blocks with 5-pair code marked on face of block, 2 horizontal wire managers, 1 universal mounting bracket. Hinged label holder for identification of stations or pairs ordered separately	14.75" x 10.75" x 5.25" (374.7mm x 273.1mm x 133.4mm)	6642 1 115-05
300-pair, 4-pair color-coded kit Includes (12) 25-pair FT blocks with 4-pair color-coding, 2 horizontal wire managers, 1 universal mounting bracket. Terminates (72) 4-pair station cables. Hinged label holder for identification of stations or pairs ordered separately	14.75" x 10.75" x 5.25" (374.7mm x 273.1mm x 133.4mm)	6642 1 315-04
300-pair, 5-pair color-coded kit Includes (12) 25-pair FT blocks with 5-pair code marked on face of block, 2 horizontal wire managers, 1 universal mounting bracket. Hinged label holder for identification of stations or pairs ordered separately	14.75" x 10.75" x 5.25" (374.7mm x 273.1mm x 133.4mm)	6642 1 315-05

Tech Tip

When installing 25-pair FT blocks, it is easier to lace the wire from bottom to top, terminate the field from top to bottom, then flip all blocks in that field.



Copper Connectivity Solutions – Specialty Products

Patch Cords for Feed-Thru (FT) Blocks

These FT patch cords use ADC Category 5e cable and exceed the requirements for Category 5e.



6/10 • 102094AE TrueNet® Structured Cabling

Ordering Information

Description		Cable Color	Catalog Number*
4-pair FT plug to FT plug, wired straight through <i>Quantity: 1</i>		White	TP5ETF-WTXX
		Red	TP5ETF-RDXX
		Blue	TP5ETF-BLXX
		Green	TP5ETF-GNXX
		Yellow	TP5ETF-YLXX
		Gray	TP5ETF-GYXX
4-pair FT plug to RJ45 (8P8C) plug, wired T568A <i>Quantity: 1</i>		White	TP5ETB0WXX
		Red	TP5ETB0RXX
		Blue	TP5ETB0BLXX
		Green	TP5ETB0GNXX
		Yellow	TP5ETB0YLXX
		Gray	TP5ETB0GYXX

*Replace XX with:

- 04 = 4'
- 07 = 7'
- 10 = 10'
- 15 = 15'
- 25 = 25'
- 50 = 50'

Ordering information continues on the next page




Copper Connectivity Solutions – Specialty Products



Copper Connectivity Solutions – Specialty Products

Patch Cords for Feed-Thru (FT) Blocks

Ordering Information

Description	Color Cable	Catalog Number*																							
4-pair FT plug to RJ45 (8P8C) plug, wired T568B <i>Quantity: 1</i> <table border="1"> <tr> <td>Wired to Pin #</td> <td>Pair No.</td> <td></td> </tr> <tr> <td>8</td> <td rowspan="2">Pair 4</td> <td>R</td> </tr> <tr> <td>7</td> <td>T</td> </tr> <tr> <td>6</td> <td rowspan="2">Pair 3</td> <td>R</td> </tr> <tr> <td>3</td> <td>T</td> </tr> <tr> <td>2</td> <td rowspan="2">Pair 2</td> <td>R</td> </tr> <tr> <td>1</td> <td>T</td> </tr> <tr> <td>4</td> <td rowspan="2">Pair 1</td> <td>R</td> </tr> <tr> <td>5</td> <td>T</td> </tr> </table> 	Wired to Pin #	Pair No.		8	Pair 4	R	7	T	6	Pair 3	R	3	T	2	Pair 2	R	1	T	4	Pair 1	R	5	T	White	TP5ETB-WTXX
	Wired to Pin #	Pair No.																							
	8	Pair 4	R																						
	7		T																						
	6	Pair 3	R																						
3	T																								
2	Pair 2	R																							
1		T																							
4	Pair 1	R																							
5		T																							
Red	TP5ETB-RDXX																								
Blue	TP5ETB-BLXX																								
Green	TP5ETB-GNXX																								
Yellow	TP5ETB-YLXX																								
1-pair FT plug to FT plug, wire straight through <i>Quantity: 1</i> <table border="1"> <tr> <td>Pair No.</td> <td></td> </tr> <tr> <td>Pair 1</td> <td>R</td> </tr> <tr> <td></td> <td>T</td> </tr> </table> 	Pair No.		Pair 1	R		T	White	6645 2 251-XX																	
	Pair No.																								
	Pair 1	R																							
	T																								
Red	6645 2 264-XX																								
Blue	6645 2 265-XX																								
2-pair FT plug to FT plug, wired straight through <i>Quantity: 1</i> <table border="1"> <tr> <td>Pair No.</td> <td></td> </tr> <tr> <td>Pair 2</td> <td>R</td> </tr> <tr> <td></td> <td>T</td> </tr> <tr> <td>Pair 1</td> <td>R</td> </tr> <tr> <td></td> <td>T</td> </tr> </table> 	Pair No.		Pair 2	R		T	Pair 1	R		T	White	6645 2 266-XX													
	Pair No.																								
	Pair 2	R																							
	T																								
Pair 1	R																								
	T																								
Red	6645 2 267-XX																								
Blue	6645 2 268-XX																								

*Replace XX with:
 04 = 4'
 07 = 7'
 10 = 10'
 15 = 15'
 25 = 25'
 50 = 50'



Copper Connectivity Solutions – Specialty Products

Feed Thru (FT) Block Test Harness

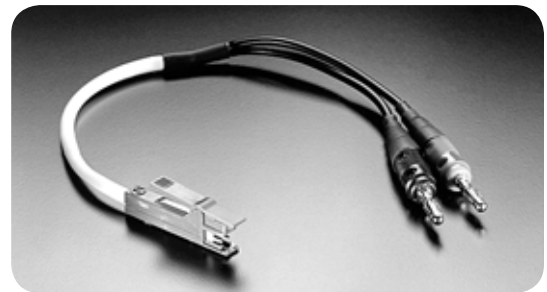
Ordering Information

Description	Dimensions (HxWxD)	Catalog Number
25-pair FT test harness Use with 25-pair FT blocks to test all 25 pairs at once. Features 50-pin female connector with hook-and-loop fastener lock; fits a variety of test equipment <i>Quantity: 1</i>	1" x 8.75" x 1.88" (25.4mm x 225.3mm x 47.6mm)	6631 2 050-01

Feed Thru (FT) Block Test Cord

Ordering Information

Description	Catalog Number
FT block test cord 1-pair FT connector to 2 banana plugs (connect to test equipment), 1' length. Used to bridge or monitor circuit <i>Quantity: 1</i>	6645 2 254-01



FT test cord



6/10 • 102094AE TrueNet® Structured Cabling