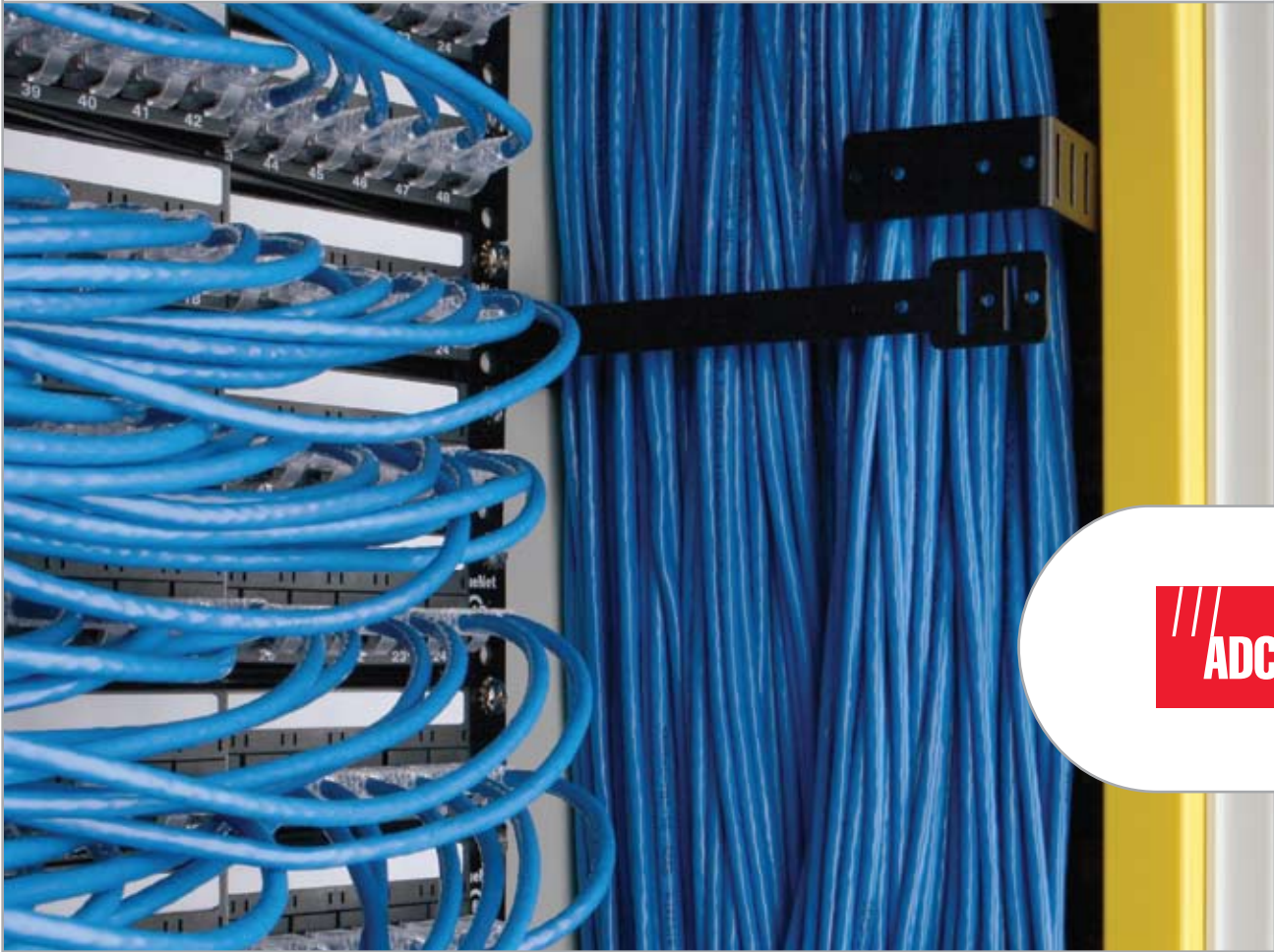


TrueNet®

Cable Management Solutions for Active Platforms



ADC's TrueNet® Cable Management Solutions for Active Platforms are a family of cable management solutions for active equipment. These solutions enable service providers to maximize their capital equipment investment and minimize operational costs.

- Manages data center space efficiently—particularly valuable in those environments where space is at a premium.
- Maximizes operational equipment life by incorporating thermal management best practices.
- Minimizes network downtime and flexibly manages cable—greatly simplifying moves, adds and changes.



Features

- High density cabling capacity and management
 - Provides physical protection and accessibility of cables for maintenance and proper thermal air flow
- Separate routing channels for fiber and copper cables
 - Provides physical protection and bend radius control of fiber cables
 - Manages entrance/exit transitions by incorporating fiber raceway solutions
- Single length patch cord between active platform and patch panels
 - Integrates slack storage for ease of use
- Modular cable management for flexibility and easy deployment
 - Utilizes RiserGuide for “plug and play” cable management
- Allows for future growth
 - Incorporates slack storage and fiber management

The Cable Management Imperative

Your network and equipment can only perform as well as your cables. A successful, well-built network must also be based on a strong cable management system. The same can be said when it comes to cabinet design.

Proper cable management has a direct impact on your network's reliability, performance, and cost. It also allows for proper thermal airflow. The TrueNet Cable Management Solutions for Active Platforms provide ample vertical and horizontal cable management. Proper management not only keeps cabling organized, it also removes the obstacles to air movement.

A strong cable management system provides, cable routing paths, cable accessibility, and physical protection. ADC products incorporate all of these elements, allowing your network to realize its full competitive potential.

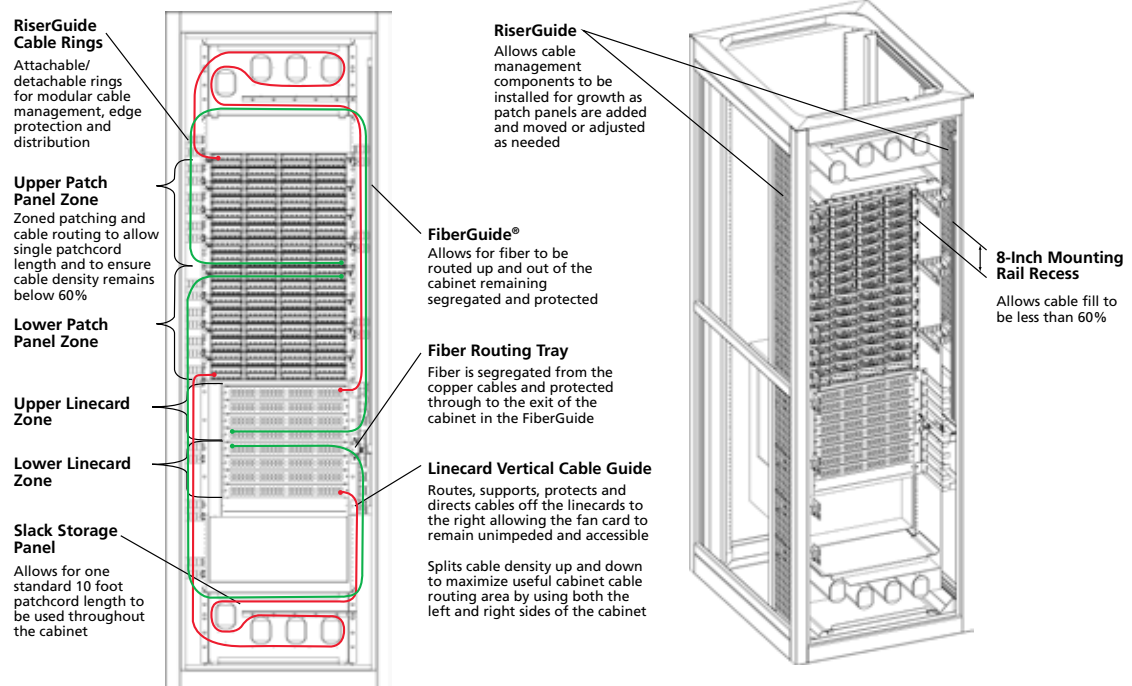


Components Tailored to Your Needs

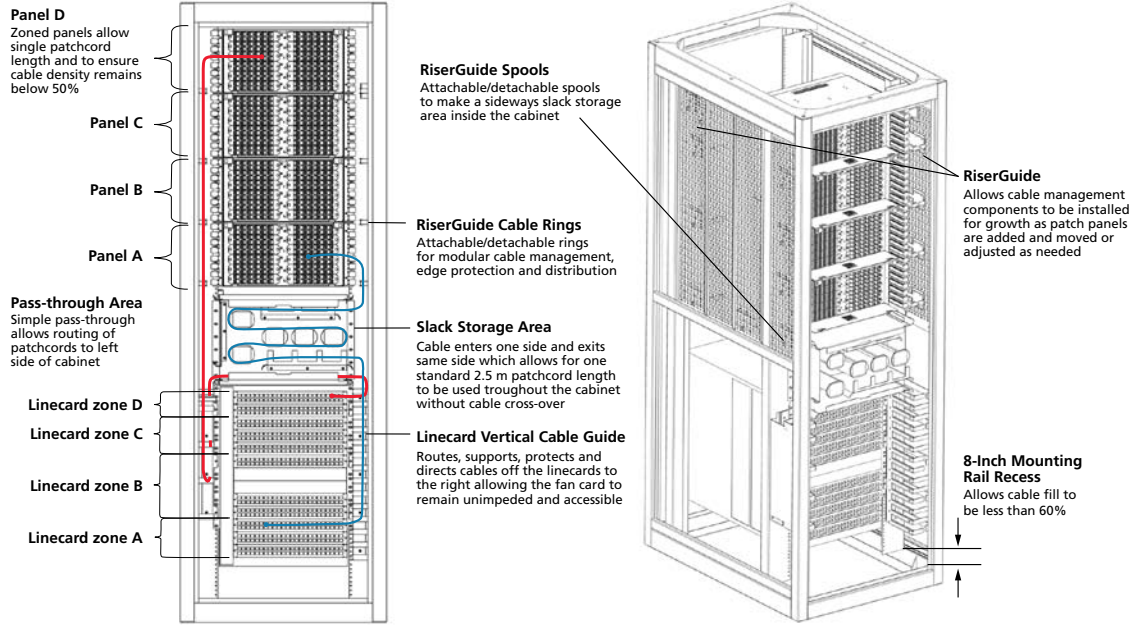
- **RiserGuide**
 - Modular cable management solution
 - Configurable for copper and fiber cable types
 - Utilizes depth of cabinet for cable management
- **FiberGuide® Raceway System**
 - Separates and protects fiber cables
- **Slack Storage Panels**
 - Enable the use of single length patch cords
- **Vertical Cable Guides**
 - Manages transition from active equipment cards to vertical cableway
 - Properly sized for maximum cable fill
- **Fiber and Copper Patch Panels**
 - Structured cabling solutions meet data center requirements

Active Cable Management and Connectivity

Copper Example



Fiber Example



Optimizing Your Active Equipment

Make the most of your active equipment investment. Ensure it delivers the performance you need by incorporating high-performance Cable Management Solutions for Active Platforms from ADC.

These unique solutions are designed to fit your specific network configuration.

For more information, contact ADC's Technical Assistance Center (TAC) to tailor a solution to fit your needs. For best results, provide the following information:

- Type of platform and quantity per rack/cabinet
- Maximum cable configuration (quantity and type of cable)
- Type of mounting environment – rack/cabinet dimensions
- Overhead or under-floor cable routing
- Type of configuration – cross-connect or interconnect

The TAC can be reached at the following locations:

Americas: 1-800-366-3891, Ext. 73000

Europe/Middle East/Africa: +32-2-712-6542

Asia Pacific: +65-6393-0739



Website: www.adc.com

From North America, Call Toll Free: 1-800-366-3891 • Outside of North America: +1-952-938-8080

Fax: +1-952-917-3237 • For a listing of ADC's global sales office locations, please refer to our website.

ADC Telecommunications, Inc., P.O. Box 1101, Minneapolis, Minnesota USA 55440-1101

Specifications published here are current as of the date of publication of this document. Because we are continuously improving our products, ADC reserves the right to change specifications without prior notice. At any time, you may verify product specifications by contacting our headquarters office in Minneapolis. ADC Telecommunications, Inc. views its patent portfolio as an important corporate asset and vigorously enforces its patents. Products or features contained herein may be covered by one or more U.S. or foreign patents. An Equal Opportunity Employer

105482AE 1/08 Revision © 2008, 2007 ADC Telecommunications, Inc. All Rights Reserved