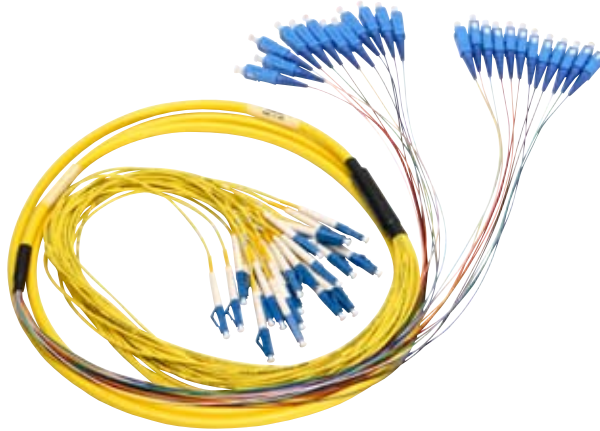


Multifiber Cable Assemblies

Reduced Bend Radius Singlemode Multifiber Patch Cords



Features and Benefits:

- Enhances the infrastructure of any network.
- Compact design and small outer diameter with 2 mm upjacket
- Reduced Bend Radius Fibers have half the bend radius as standard singlemode fiber
- Excellent for use where technician handling is a concern
- Well suited for use in:
 - Cross-connect applications (upjacketed on both ends)
 - Interconnect applications (upjacketed on active end)
 - Industry standard connector styles
- Available with tight buffered 900 micron fibers enclosed in an outer jacket and 2 mm upjacket breakout.
- Active ethernet applications
- Accommodates multiple counts on any active shelf solution
- Upjacketing and reduced bend radius characteristics provide fiber protection often missing at the active side
- Allows a one-time run of multiple fibers in FiberGuide®, minimizing the pile up
- Eliminates operational expense of running individual patch cords for each service turn-up

SPEC SHEET



www.adc.com • +1-952-938-8080 • 1-800-366-3891

Catalog Number

FPM-0 / - / M- /

**Connector Type
(1st and 2nd end)**

0	Stub (only on 2nd end)
7	SC ultra polish
E	SC angled polish
K	LC ultra polish
M	LC angled polish

Breakout Length

X	Length in inches
LEAVE BLANK	Both ends 0.31 m (12")

Assembly Length

001-020	1-20 meters in 1 meter increments
025-065	25-65 meters in 5 meter increments
070-150	70-150 meters in 10 meter increments

Cable Type

AC	2-fiber reduced bend radius with 900 µm buffered fiber with 2 mm upjacket (yellow)
AN	4-fiber reduced bend radius with 900 µm buffered fiber with 2 mm upjacket (yellow)
AR	6-fiber reduced bend radius with 900 µm buffered fiber with 2 mm upjacket (yellow)
AS	8-fiber reduced bend radius with 900 µm buffered fiber with 2 mm upjacket (yellow)
AF	12-fiber reduced bend radius with 900 µm buffered fiber with 2 mm upjacket (yellow)
AT	24-fiber reduced bend radius with 900 µm buffered fiber with 2 mm upjacket (yellow)

Note: Pulling socks, other connector styles and breakout lengths are available upon request. Please contact ADC Technical Assistance Center.



Website: www.adc.com

From North America, Call Toll Free: 1-800-366-3891 • Outside of North America: +1-952-938-8080

Fax: +1-952-917-3237 • For a listing of ADC's global sales office locations, please refer to our website.

ADC Telecommunications, Inc., P.O. Box 1101, Minneapolis, Minnesota USA 55440-1101

Specifications published here are current as of the date of publication of this document. Because we are continuously improving our products, ADC reserves the right to change specifications without prior notice. At any time, you may verify product specifications by contacting our headquarters office in Minneapolis. ADC Telecommunications, Inc. views its patent portfolio as an important corporate asset and vigorously enforces its patents. Products or features contained herein may be covered by one or more U.S. or foreign patents. An Equal Opportunity Employer